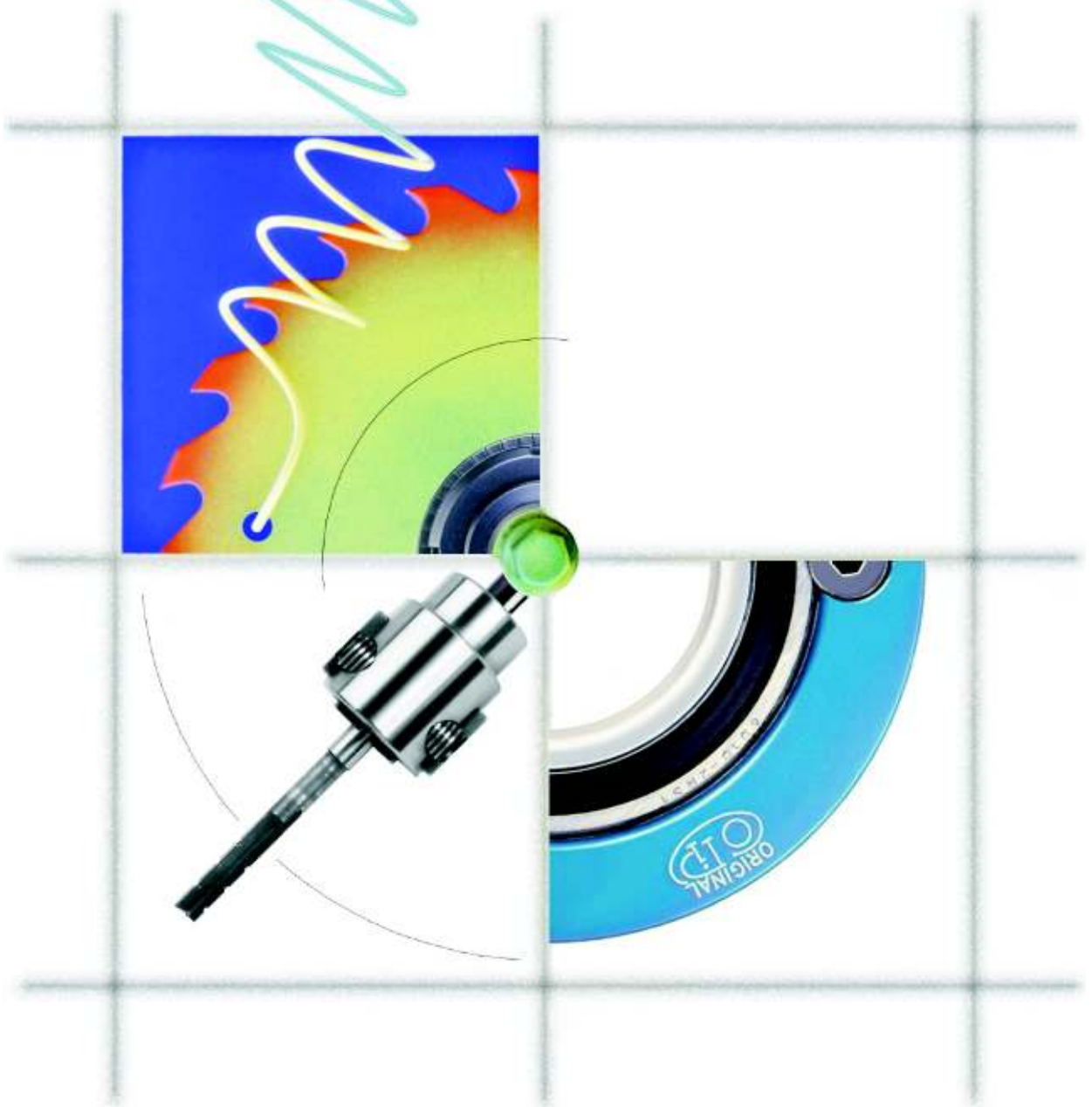


ORIGINAL
OP

dal 1942



ORIGINAL
OP
dal 1942

CONSEGNI PIERINO s.r.l. - Via del Saliccio 6/B - QUINZANO DI SUMIRAGO (VA) - ITALY
Tel: +39 0331 270268 Fax: +39 0331 906448 e-mail: info@consegni.it web: www.consegni.it

MANDRINO DI TIPO PROFESSIONALE A DUE GRIFFE PER SERRARE PUNTE, FRESE E MECCHIE PER LA LAVORAZIONE DEL LEGNO. VIENE UTILIZZATO DAI PIÙ IMPORTANTI COSTRUTTORI PER ESSERE MONTATO COME PRIMO EQUIPAGGIAMENTO SULL'ALBERO DI CAVATRICI E MACCHINE COMBinate. I MANDRINI POSSONO ESSERE FORNITI ANCHE CON CALOTTA DI PROTEZIONE. SU RICHIESTA SI ESEGUONO MANDRINI SPECIALI CON ATTACCHI SU DISEGNO DEL CLIENTE.

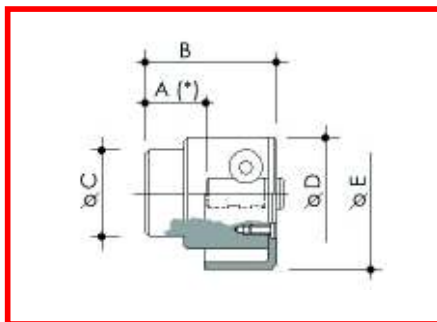
PROFESSIONAL TWO-JAW CHUCK TO CHUCK DRILLS, CUTTERS AND BITS FOR WOOD-WORKING. IT IS USED BY THE MOST IMPORTANT MANUFACTURES AS FIRST EQUIPMENT TO BE INSTALLED ON THE SHAFT OF MORTISING MACHINES AND WOOD-WORKING MACHINES. THE CHUCKS CAN BE SUPPLIED ALSO WITH A COVER. BY REQUEST IT IS POSSIBLE TO PRODUCE SPECIAL CHUCKS WITH COUPLINGS DESIGNED BY THE CUSTOMER.



STANDARD

ATTACCHI A DISEGNO - CUSTOMER'S DRAWINGS





CODICE CODE	APERTURA OPENING MM	CONO CONE DIN 238/2	CHIAVE KEY Esag. Exagon	PESO WEIGHT Kg	A MM	B MM	C MM	D MM
WS01057N16	0+10	B 16	6	0,400	26	57	32	42
WS01364N16	0+13	B 16	6	0,720	32	64	40	50
WS01370N16	0+13	B 16	6	0,720	32	70	40	50
WS01670N18	0+16	B 18	7	1,020	32,5	70	44	54
WS01674N18	0+16	B 18	7	1,020	37	74,5	44	54
WS02076N22	0+20	B 22	8	1,380	36	76	50	61
WS02086N22	0+20	B 22	8	1,380	46	86	50	61
WS02693N24	0+26	B 24	8	2,100	46	93	59	70



CODICE CODE	APERTURA OPENING MM	CONO CONE DIN 238/2	CHIAVE KEY Esag. Exagon	PESO WEIGHT Kg	A MM	B MM	C MM	E MM
WS01057C16	0+10	B 16	6	0,400	26	57	32	55
WS01364C16	0+13	B 16	6	0,720	32	64	40	62
WS01370C16	0+13	B 16	6	0,720	32	70	40	62
WS01670C18	0+16	B 18	7	1,020	32,5	70	44	76
WS01674C18	0+16	B 18	7	1,020	37	74,5	44	76
WS02076C22	0+20	B 22	8	1,380	36	76	50	83
WS02086C22	0+20	B 22	8	1,380	46	86	50	83
WS02693C24	0+26	B 24	8	2,100	46	93	59	99

(*) Misura per l'attacco a disposizione sui mandrini standard per lavorazioni speciali
Measure for the coupling available on standard chucks for special working

MANDRINO SERIE LEGGERA A DUE GRIFFE PER SERRARE PUNTE, FRESE E MECCHIE PER LA LAVORAZIONE DEL LEGNO.

VIENE UTILIZZATO DAI PIÙ IMPORTANTI COSTRUTTORI PER ESSERE MONTATO COME PRIMO EQUIPAGGIAMENTO SULL'ALBERO DI CAVATRICI E MACCHINE COMBinate.

I MANDRINI POSSONO ESSERE FORNITI ANCHE CON CALOTTA DI PROTEZIONE.

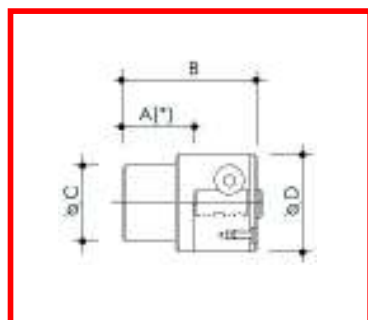
SU RICHIESTA SI ESEGUONO MANDRINI SPECIALI CON ATTACCHI SU DISEGNO DEL CLIENTE.

TWO-JAW CHUCK 'LIGHT SERIES' TO CHUCK DRILLS, CUTTERS AND BITS FOR WOOD-WORKING.

IT IS USED BY THE MOST IMPORTANT MANUFACTURES AS FIRST EQUIPMENT TO BE INSTALLED ON THE SHAFT OF MORTISING MACHINES AND WOOD-WORKING MACHINES.

THE CHUCKS CAN BE SUPPLIED ALSO WITH A COVER.

BY REQUEST IT IS POSSIBLE TO PRODUCE SPECIAL CHUCKS WITH COUPLINGS DESIGNED BY THE CUSTOMER.



(*) Misura per l'attacco a disposizione sui mandrini standard per lavorazioni speciali
Measure for the coupling available on standard chucks for special working

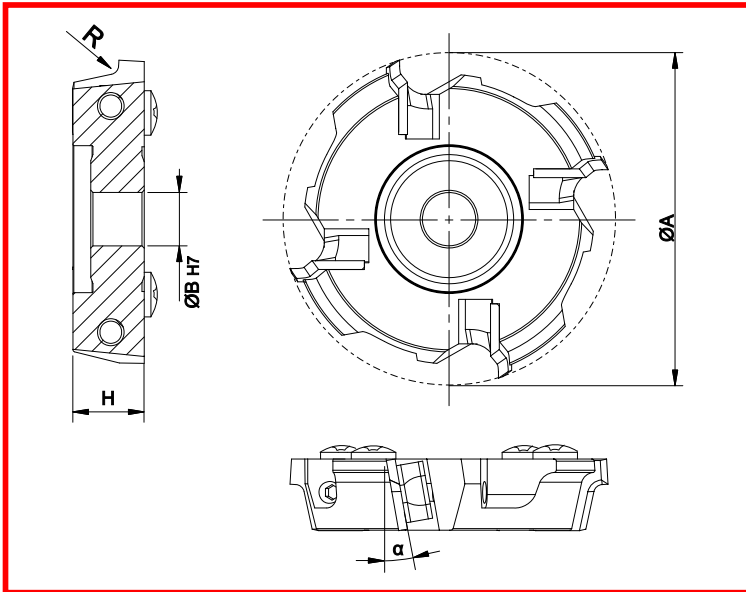
CODICE CODE	APERTURA OPENING MM	CONO CONE DIN 238/2	CHIAVE KEY Esag. Ex.	PESO WEIGHT Kg	A MM	B MM	C MM	D MM
WH01360N16	0+13	B 16	6	0,500	28	60	35	44
WH01659N16	0+16	B 16	7	0,500	27	59	40	52
WH01664N16	0+16	B 16	7	0,800	32	64	40	52
WH01670N16	0+16	B 16	7	0,800	38,5	70	40	52
WH31657N16	3+16	B 16	7	0,800	25,5	57	40	52
WH31670N16	3+16	B 16	7	0,800	38,5	70	40	52

STANDARD



ATTACCHI A DISEGNO - CUSTOMER'S DRAWINGS

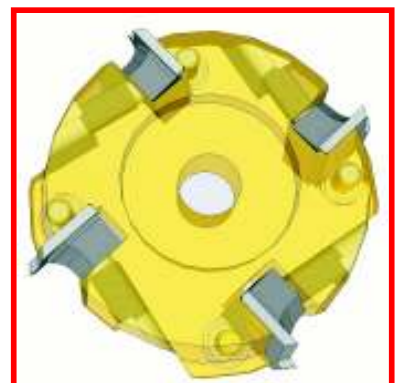
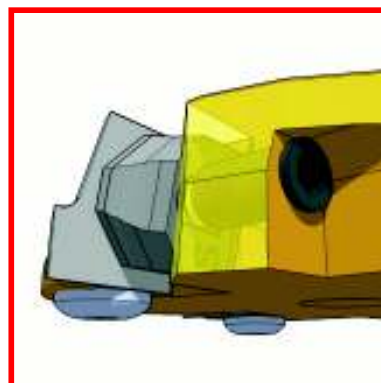




ØA	ØB	H	α	R
75	12	16	15°	2
97	12	10	0°	3
ALTRE MISURE A DISEGNO - OTHER MEASURES BY CUSTOMER'S DRAWING				

CARATTERISTICHE TECNICHE:

- N° GIRI-MAX: 18.000
- GRADO DI EQUILIBRATURA: 0,2g
- CORPO FRESA IN ERGAL ANODIZZATO
- COLTELLI IN METALLO DURO
- TOLLERANZA DIAMETRO ROTAZIONE COLTELLI: ±0,01mm

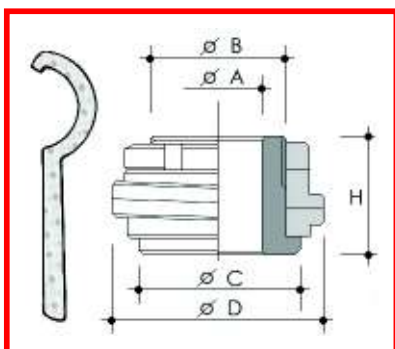


APPARECCHIO OSCILLANTE PORTA LAMA:
MAGGIORMENTE IMPIEGATO SU ALBERI DELLA MACCHINA
TOUPIE PER LA LAVORAZIONE DEL LEGNO.
VIENE FORNITO COMPLETO DI CHIAVE A SETTORE.

OSCILLATING CUTTER-BLOCK: MAINLY USED ON SHAFTS OF
TOUPIE WOOD-WORDING MACHINES.
THEY ARE SUPPLIED COMPLETE WITH PIN WRENCH.



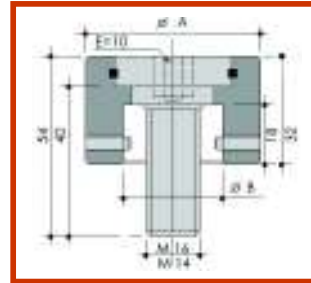
SU RICHIESTA SI FORNISCONO COMPLETI DI LAME CIRCOLARI IN ACCIAIO SUPER RAPIDO O METALLO DURO.
BY REQUEST THEY CAN BE SUPPLIED WITH CIRCULAR BLADES IN SHSS OR HARD METAL



CODICE CODE	A MM	B MM	C MM	D MM	H MM
OS45002500	25	45	55	84	46
OS45003000	30	45	55	84	46
OS45003500	35	45	55	84	46
OS50003000	30	50	60	84	46
OS50003500	35	50	60	84	46
OS55003000	30	55	63	84	46
OS55003500	35	55	63	84	46
OS55004000	40	55	63	84	46
OS62005000	50	62	72	94	51

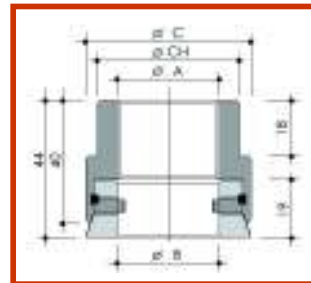
VITE IMPERDIBILE ANTISVITAMENTO - CAP WITH ANTISCREWING SCREW

CODICE / CODE M16	CODICE / CODE M14	A	B
V5030016	V5030014	50	30
V5535016	V5535014	55	35
V6040016	V6040014	60	40
V6545016	V6545014	65	45
V7050016	V7050014	70	50



DADO IMPERDIBILE ANTISVITAMENTO - NUT WITH ANTISCREWING SCREW

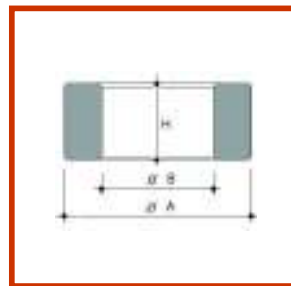
CCO.	CCO.	CCO.	Ch	A	B	C
D2402002	D2402004	D2402006	41	24x2	30	50
D3001502	D3001504	D3001506	41	30x1,5	30	50
D3002002	D3002004	D3002006	41	30x2	30	50
D3501502	D3501504	D3501506	46	35x1,5	35	55
D3502002	D3502004	D3502005	46	35x2	35	55
D4002002	D4002004	D4002006	50	40x2	40	60
D4802002	D4802004	D4802006	60	48x2	50	70
D5002002	D5002004	D5002006	60	50x2	50	70



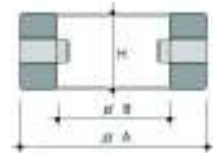
ANELLI DISTANZIATORI PER ALBERI TOUPIE - SPACERS FOR TOUPIE-SHAFTS

A / B MM	CODICE CODE
45 / 30	A45300□□
50 / 30	A50300□□
50 / 35	A50350□□
55 / 35	A55350□□
55 / 40	A55400□□
60 / 40	A60400□□
65 / 50	A65500□□
70 / 50	A70500□□
80 / 60	A80600□□
90 / 70	A90700□□
50 / 3/4"	A50034□□
50 / 1"	A50100□□
50 / 1 1/8"	A50118□□
52 / 1 1/8"	A52118□□
52 / 1 1/4"	A52114□□
58 / 1 1/2"	A58112□□

□□	H
02	2
03	3
04	4
05	5
06	6
07	7
08	8
10	10
12	12
13	13
15	15
16	16
20	20
25	25
30	30
35	35
40	40
63	63



SU RICHIESTA:
ANELLO ANTISVITAMENTO
BY REQUEST:
ANTI-UNSCREWING RING
COD: A _____ +AS (es: A5030016AS)



CARATTERISTICHE TECNICHE:

- SUPERFICIE TEMPRATA
- PROFONDITÀ 0,15/0,20 MM
- DUREZZA: HV1 350/400
- SISTEMA ANTI-GRIPPANTE
- COLORE NERO BRUNITO

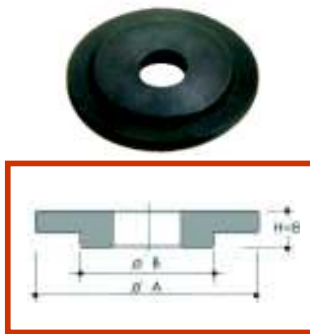
TECHNICAL FEATURES:

- HARDENED SURFACE
- DEEP 0,15/0,20 MM
- HARDNESS: HV1 350/400
- ANTI-SCUFFING SYSTEM
- BLACK FURNISHED

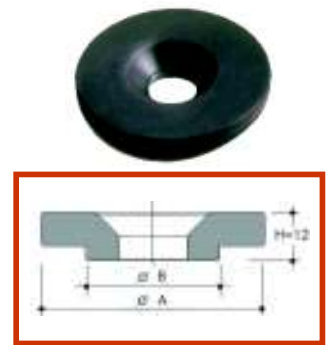
RONDELLE CHIUDIPACCO

RONDELLE CHIUDIPACCO PER ALBERI TOUPIE - LOCKING WASHER FOR TOUPIE SHAFTS

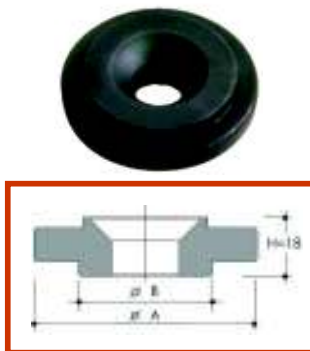
CODICE CODE	A / B	H
C5030080	50 / 30	8
C5535080	55 / 35	8
C6040080	60 / 40	8
C7050080	70 / 50	8



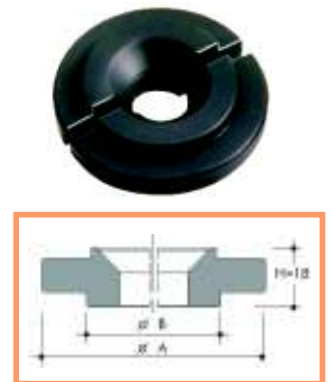
CODICE CODE	A / B	H
C5030120	50 / 30	12
C5535120	55 / 35	12
C6040120	60 / 40	12
C7050120	70 / 50	12



CODICE CODE	A / B	H
C5030180	50 / 30	18
C5535180	55 / 35	18
C6040180	60 / 40	18
C7050180	70 / 50	18



CODICE CODE	A / B	H
C705018T	70 / 50	18

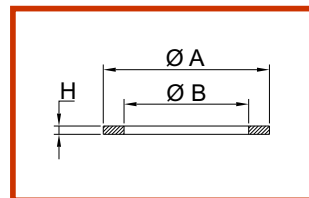


RIDUZIONI FORI LAMA

CODICE CODE	A	B
R4035□□□	40	35
R4030□□□	40	30
R4025□□□	40	25
R4020□□□	40	20
R3530□□□	35	30
R3525□□□	35	25
R3520□□□	35	20
R3230□□□	32	30
R3025□□□	30	25
R3020□□□	30	20
R3016□□□	30	16
R2016□□□	20	16

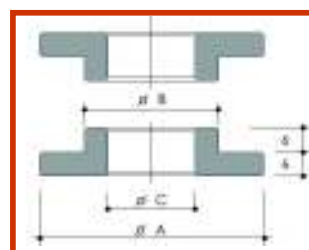
□□□	H
015	1,5
020	2
030	3
040	4
050	5
060	6
080	8
100	10
150	15

RONDELLE DI RIDUZIONE - BORES-REDUCING SPACE WASHERS



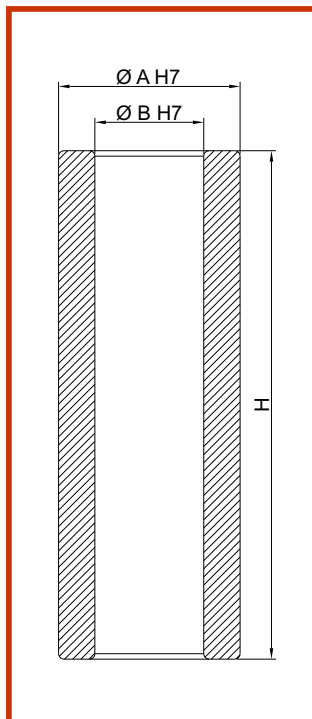
CODICE CODE	A	B	C
F6850400	68	50	40
F6850350	68	50	35
F6850300	68	50	30
F6040350	60	40	35
F6040300	60	40	30
F5535300	55	35	30
F5030200	50	30	20

FLANGE DI RIDUZIONE - BORES-REDUCING SPACE COLLARS

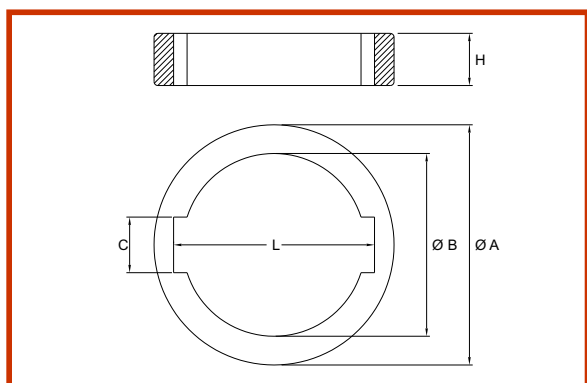


BOCCOLE DI RIDUZIONE

CODICE CODE	A / B	H
B5030130	50 / 30	130
B5030140	50 / 30	140
B5030170	50 / 30	170
B5030180	50 / 30	180
B5035130	50 / 35	130
B5035140	50 / 35	140
B5035170	50 / 35	170
B5035180	50 / 35	180
B5040130	50 / 40	130
B5040140	50 / 40	140
B5040170	50 / 40	170
B5040180	50 / 40	180



ANELLI DISTANZIALI PER MULTILAMA IN ALLUMINIO



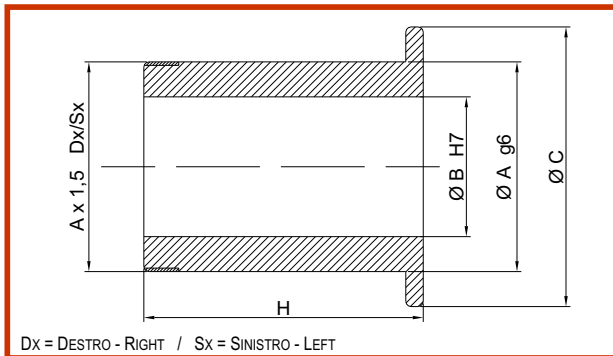
CODICE CODE	A	B	C	L	H
L9270002	92	70	21	77	2
L9270005	92	70	21	77	5
L9270008	92	70	21	77	8
L9270010	92	70	21	77	10
L9270015	92	70	21	77	15
L9270020	92	70	21	77	20
L9270025	92	70	21	77	25



MOZZI PER GRUPPO DI UTENSILI - SLEEVES FOR SET OF TOOLS

CODICE CODE	A MM	B MM	C MM	Filetto - Screw MM	□□□	H
Z5030□□□	50	30	70	50x1,5	060	60
Z5035□□□	50	35	70	50x1,5	070	70
Z5040□□□	50	40	70	50x1,5	080	80
Z6030□□□	60	30	80	60x1,5	090	90
Z6035□□□	60	35	80	60x1,5	095	95
Z6040□□□	60	40	80	60x1,5	100	100
Z6045□□□	60	45	80	60x1,5	105	105
Z6050□□□	60	50	80	60x1,5	110	110
Z7050□□□	70	50	90	70x1,5	115	115
					120	120
					125	125
					130	130

ALTRE MISURE A DISEGNO - OTHER MEASURES BY CUSTOMER'S DRAWING



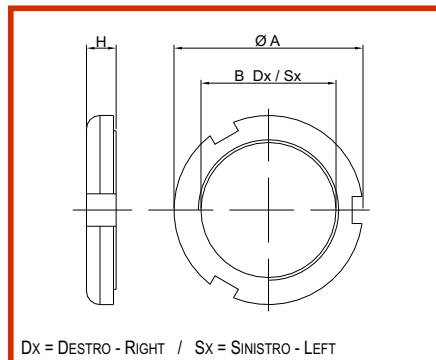
GHIERE FILETTATE

GHIERA FILETTATA - THREADED METAL RING

CODICE CODE	A MM	B MM	H MM
GF701150	70	50x1,5	11
GF800660	80	60x1,5	6

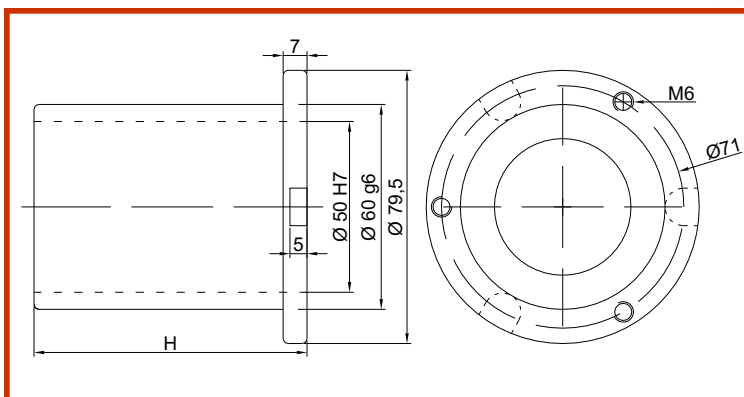
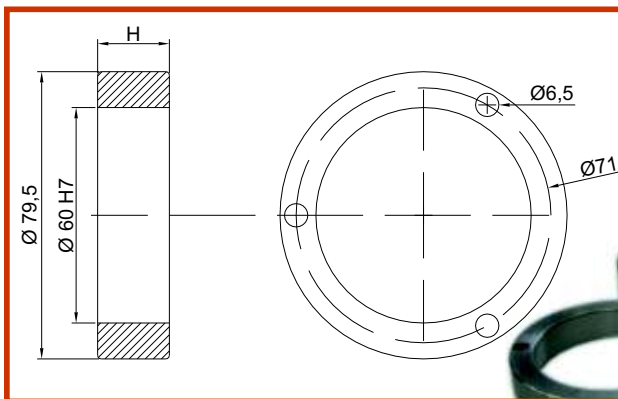
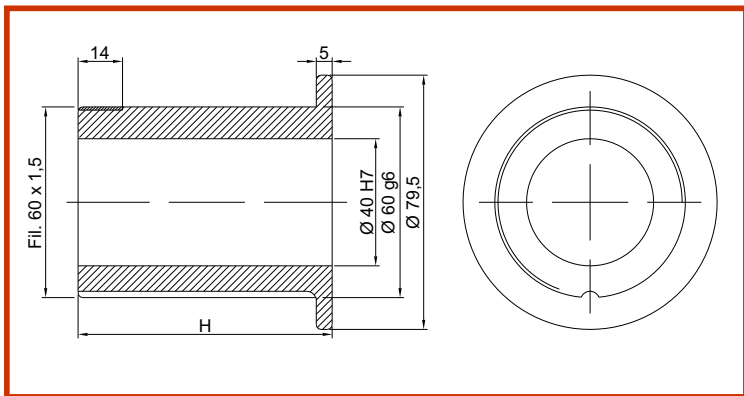
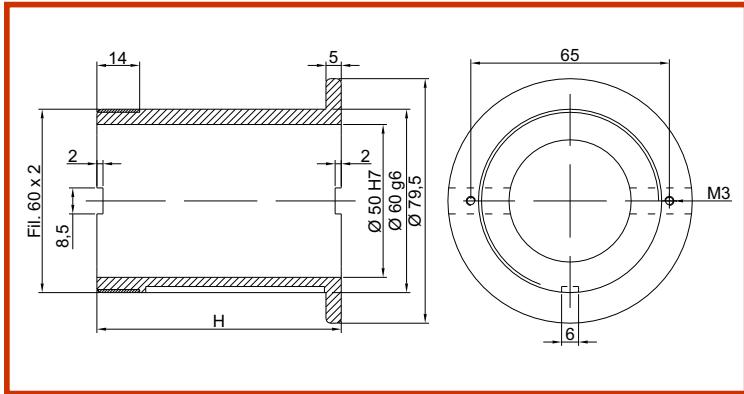
CARATTERISTICHE TECNICHE:
 - SUPERFICIE TEMPRATA
 - PROFONDITÀ 0,15/0,20 MM
 - DUREZZA: HV1 350/400
 - SISTEMA ANTI-GRIPANTE
 COLORE NERO BRUNITO

TECHNICAL FEATURES:
 - HARDENED SURFACE
 - DEEP 0,15/0,20 MM
 - HARDNESS: HV1 350/400
 - ANTI-SCUFFING SYSTEM
 BLACK FURNISHED



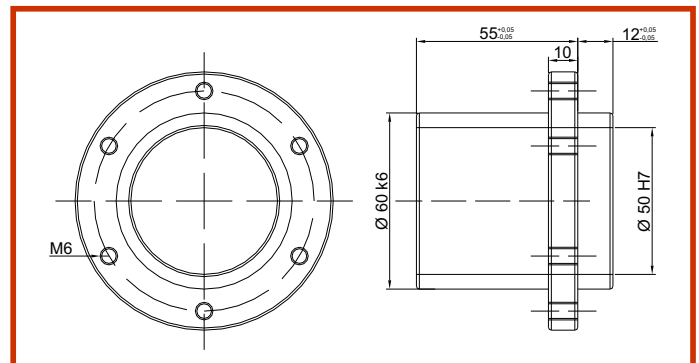
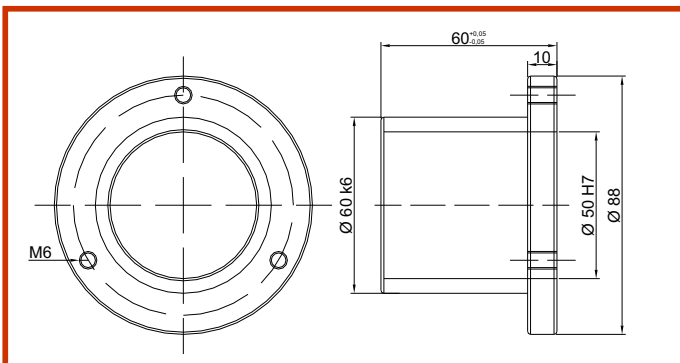
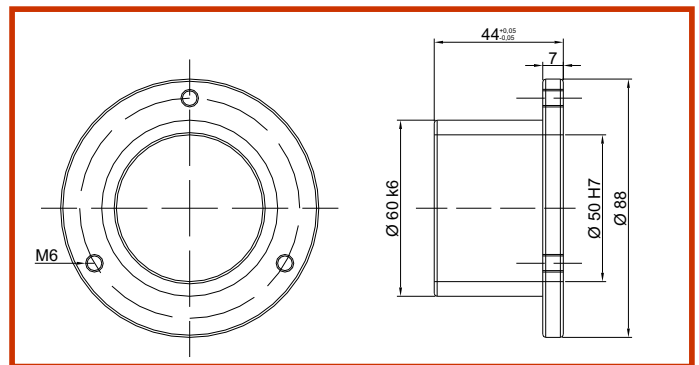
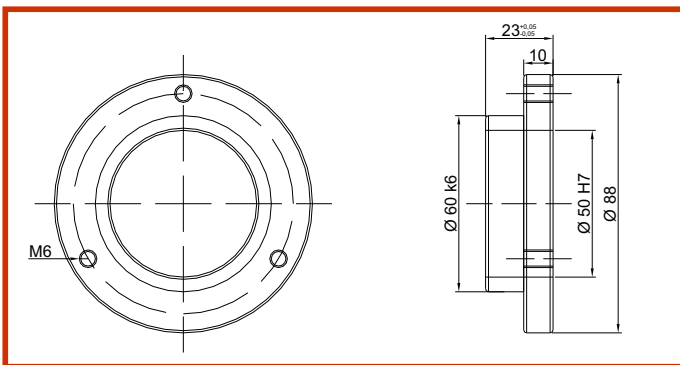
Esempi di mozzi a disegno

EXAMPLES OF CUSTOMER'S DRAWINGS



Esempi di mozzi a disegno

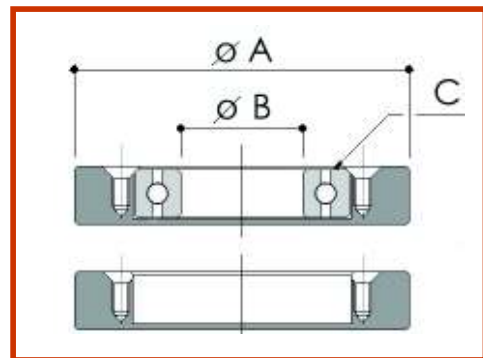
EXAMPLES OF CUSTOMER'S DRAWINGS





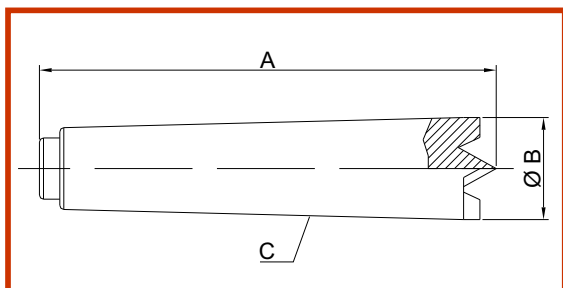
**CUSCINETTO A SFERE PER
 COPIATURA DOTATO DI UNA
 SERIE DI 9 ANELLI IN ALLUMINIO
 INTERCAMBIABILI**

**BALL BEARING WITH 9
 INTERCHANGEABLE ALUMINIUM
 RINGS**



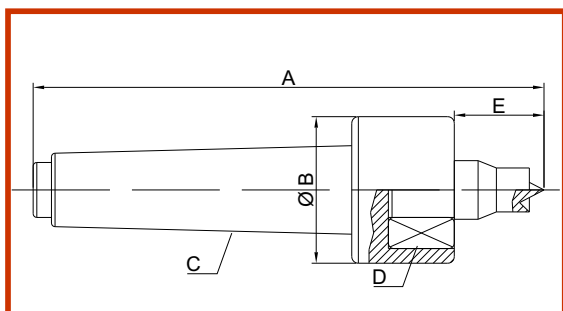
A									B	C CUSCINETTO A SFERE BALL BEARING	CODICE CODE
1	2	3	4	5	6	7	8	9			
90	95	100	105	110	115	120	125	130	30	6007 2RS	SAL0913300
90	95	100	105	110	115	120	125	130	35	6007 2RS	SAL0913350
100	105	110	115	120	125	130	135	140	40	6010 2RS	SAL1014400
100	105	110	115	120	125	130	135	140	50	6010 2RS	SAL1014500

MANDRINO TRASCINATORE - DRAGGING CHUCK



CODICE CODE	A	B	C CONO MORSE
MT097252	97	25	NR.2
MT112253	112	25	NR.3
MT097352	97	35	NR.2
MT112353	112	35	NR.3

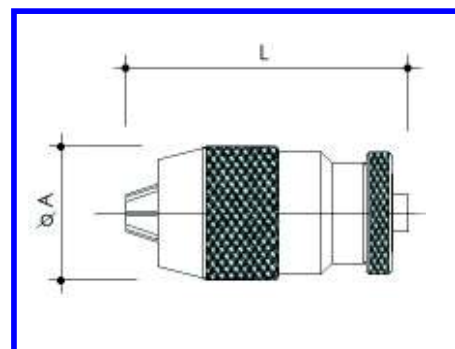
CONTROPUNTA GIREVOLE - ROTATING TAILSTOCK



CODICE CODE	A	B	C CONO MORSE	D CUSCINETTO A SFERE BALL BEARING	E
CN133402	133	40	NR.2	3202-2RS	34
CN149403	149	40	NR.3	3202-2RS	34
CN169402	169	40	NR.2	3202-2RS	70
CN185403	185	40	NR.3	3202-2RS	70

MANDRINO A TRE GRIFFE PER TRAPANO DI PRECISIONE DI TIPO INDUSTRIALE IN ESECUZIONE NORMALE.

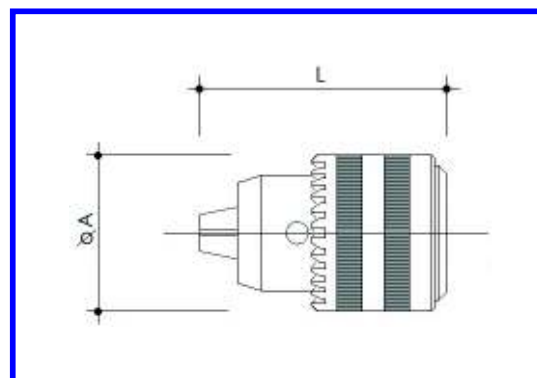
THREE-JAW CHUCKS FOR PRECISION INDUSTRIAL DRILLING MACHINES FOR STANDARD WORKING.



CODICE CODE	APERTURA OPENING MM	CONO CONE DIN 238/2	PESO WEIGHT Kg	A MM	L MM
AT00600010	0+6	B10	0,250	32	63
AT00800010	0+8	B10	0,280	35	70
AT00800012	0+8	B12	0,280	35	70
AT01000012	0+10	B12	0,400	42	87
AT01000016	0+10	B16	0,400	42	87
AT01300016	0+13	B16	0,700	48	103
AT31600016	3+16	B16	1,000	53	105
AT31600018	3+16	B18	1,000	53	105

MANDRINO A TRE GRIFFE PER TRAPANO DI PRECISIONE
TIPO INDUSTRIALE PESANTE CON CHIUSURA A CREMAGLIERA.
FORNITO COMPLETO DI CHIAVE DENTATA.

THREE-JAW CHUCKS FOR PRECISION DRILLS WITH RACK CLAMP FOR HEAVY
INDUSTRY, EQUIPED WITH TOOTHED SPANNER



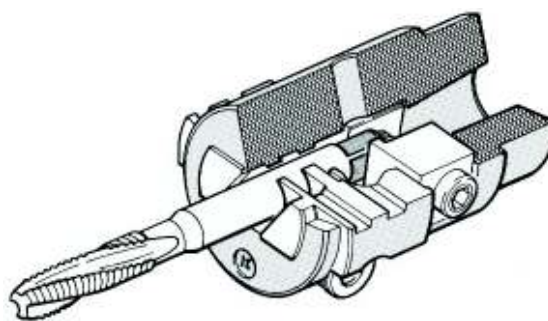
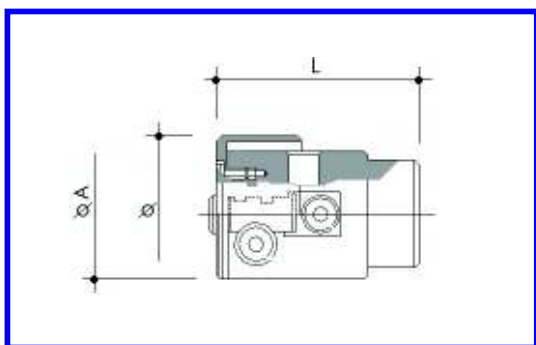
CODICE CODE	APERTURA OPENING MM	CONO CONE DIN 238/2	PESO WEIGHT Kg	CODICE CHIAVE CODE KEY	A MM	L MM
AM00300000	0+3		0,075	CRAM003R11	23,5	36
AM00400010	0+4	B10	0,100	CRAM004R12	26	46
AM00600010	0+6	B10	0,150	CRAM006R13	32	53
AM00800012	0+8	B12	0,190	CRAM008R14	34	58
AM01000016	0+10	B16	0,420	CRAM010R15	45	76
AM01300016	0+13	B16	0,750	CRAM013R16	56	90
AM31600016	3+16	B16	0,750	CRAM316R16	56	90
AM01600018	0+16	B18	1,050	CRAM016R16	62	100

MANDRINI PER MASCHIATRICI IN ESECUZIONE A DUE GRIFFE E GRIFFE SUPPLEMENTARI AUTOCENTRANTI PER TRASCINAMENTO MASCHIO

CHUCKS FOR TAPPING MACHINES WITH TWO SELF-CENTERING JAWS AND ADDITIONAL ONES FOR THE DRAGGING OF THE MALE CONNECTOR

CODICE CODE	APERTURA OPENING MM	CONO CONE DIN 238/2	CHIAVE KEY Esag. Exagon	A MM	L MM
PL010N0012	0+10	B 12	6	42	73
PL010N0016	0+10	B 16	6	42	73
PL013N0016	0+13	B 16	6	50	82
PL013N0018	0+13	B 18	6	50	82
PL016N0016	0+16	B 16	7	55	87
PL016N0018	0+16	B 18	7	55	87
PL020N0022	0+20	B 22	8	62	96
PL026N0024	0+26	B 24	8	75	130

PALC



CODICE CODE	APERTURA OPENING MM	CONO CONE DIN 238/2	CHIAVE KEY Esag. Exagon	B MM	L MM
PL010C0012	0+10	B 12	6	55	73
PL010C0016	0+10	B 16	6	55	73
PL013C0016	0+13	B 16	6	62	82
PL013C0018	0+13	B 18	6	62	82
PL016C0016	0+16	B 16	7	74	87
PL016C0018	0+16	B 18	7	74	87
PL020C0022	0+20	B 22	8	84	96
PL026C0024	0+26	B 24	8	99	130

PALC 46

